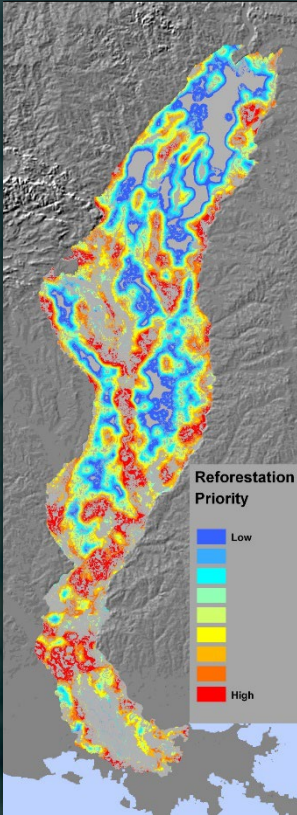


# Lower Mississippi Valley Joint Venture

Promoting *Coordination & Focus*

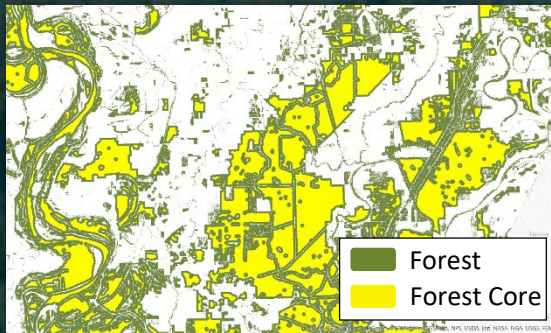
*in Landscape Scale Conservation...*

M  
I  
S  
S  
I  
S  
S  
I  
P  
P  
I  
  
A  
L  
L  
U  
V  
I  
A  
L  
  
V  
A  
L  
L  
E  
Y



LMJV partners have collaborated since the early 1990s to increase bottomland hardwood forest by over 1 million acres – utilizing science to focus our work in high priority landscapes.

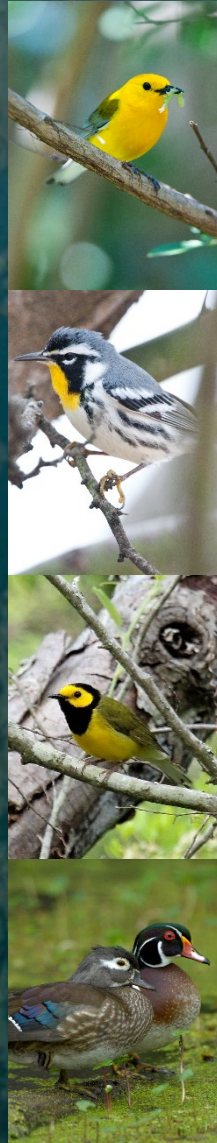
This strategic approach to forest conservation has resulted in a nearly 50% increase in Forest Core – buffered forest essential to forest interior breeding species



The Tri-state Conservation Partnership provides leadership and coordination for effective and efficient delivery and management of Wetlands Reserve Easements (WRE) in Arkansas, Louisiana, and Mississippi.



*...a Potent Combination!!*





# Lower Mississippi Valley Joint Venture

Promoting *Coordination & Focus*

*in Landscape Scale Conservation...*



6-year-old shortleaf pine with prescribed fire - Jason Ellis, Fairchild State Forest

Shortleaf pines thrive with prescribed fire and seedlings can resprout after fire if top-killed.

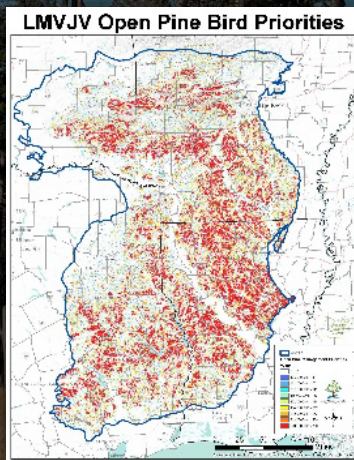


Open pine with quality shrubs - Austin Klais

Periodic thinning and prescribed fire maintains native grasses and wildflowers that encourage



Application of science-focused priorities, coupled with dynamic partnership coordinated through the **AR-LA Open Pine RCPP & NE Texas Habitat Incentive Program** is yielding impressive results.



**AR-LA RCPP – 45,000 acres**  
**NETX HIP – 23,000 acres**

*.....and counting!*

*...a Potent Combination!!*

W  
E  
S  
T  
  
G  
U  
L  
F  
  
C  
O  
A  
S  
T  
A  
L  
  
P  
L  
A  
I  
N